

Medical Gas Alarm

The WTK medical gas alarm is designed to monitor piped gas pressure (normal, high and low pressure on up to six gases) via pressure switches, in theatres, wards etc. after final Area Valve Services Units and fully meets all the international requirements. In addition, the alarm will also act as a slave to another alarm within 250 metres by using a two core screened cable. WTK also offers repeater alarm, End of Line Monitor (E.O.L.), pressure switches stub, BMS interface as optional accessories upon request

Description

Individual gas status is provided by six sets of three long-life, 10 x 20-mm block LED's indicating NORMAL, HIGH and LOW conditions for each service through a replaceable lens mounted behind a wipe-clean membrane.



Medical Gas Alarm BMS interface

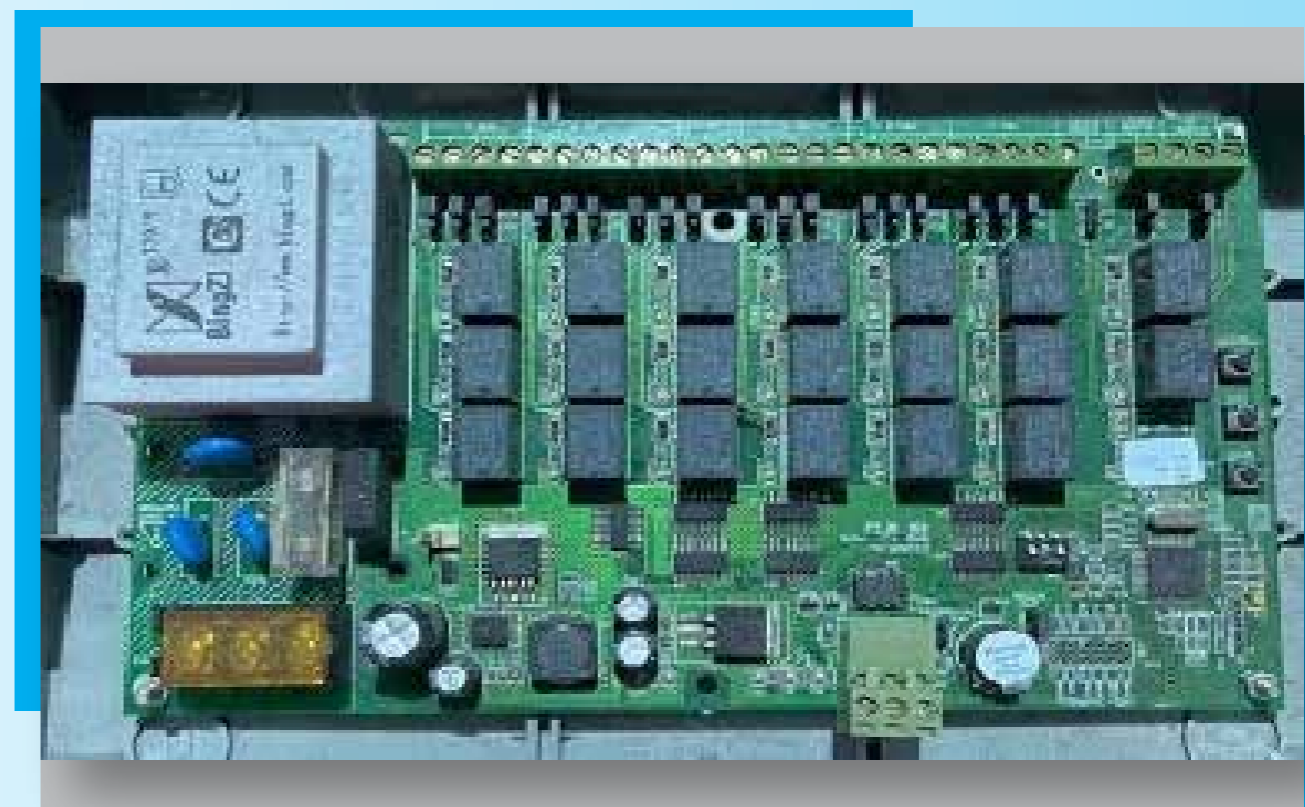
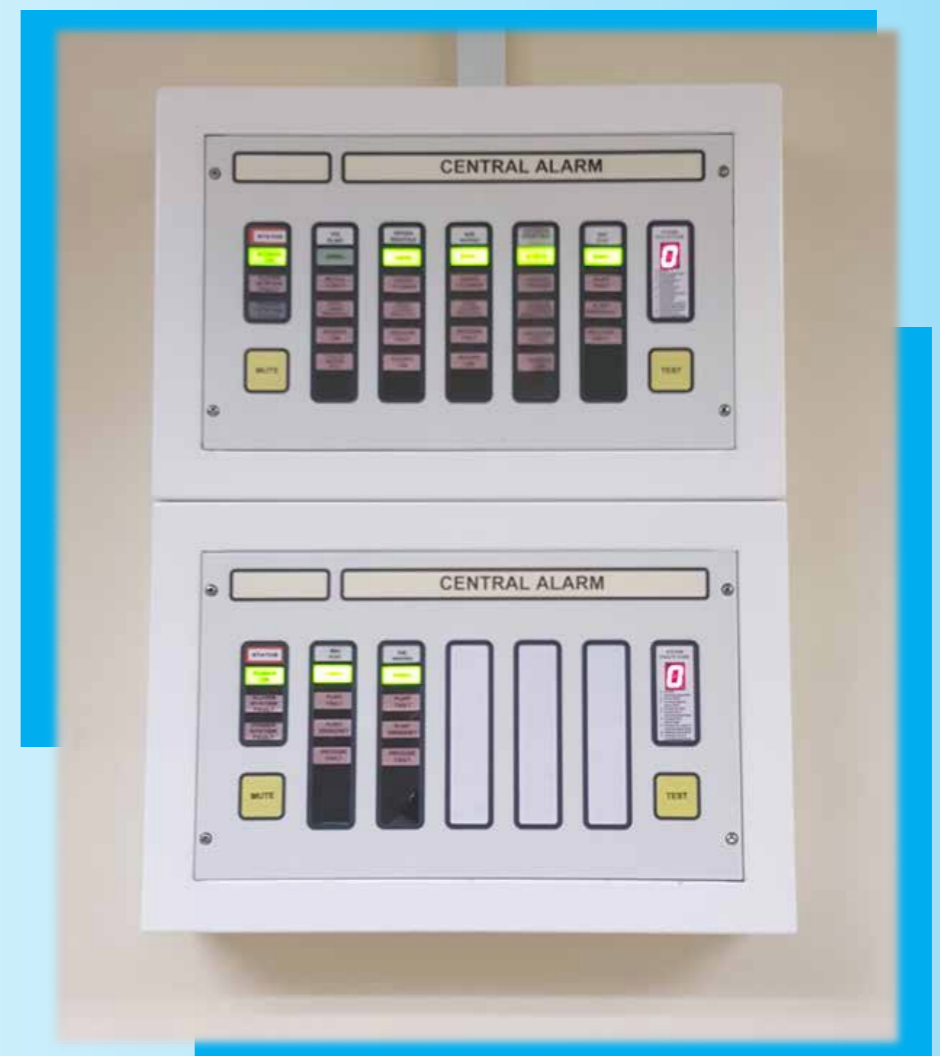
The BMS interface is used to translate the status of gas devices to the BMS and the display boards. If the fault reaches the alert level, the corresponding LED will be flashing and the speaker on the power supply board will sound in order to give out an audible alert.

BMS module will change the state of the relay of the corresponding block with the same gas identity number wherever the fault level is

When all conditions and the power supply are at normal, the only lights showing are POWER ON and NORMAL. If any signal contact opens, the appropriate NORMAL light goes out, the appropriate red fault light will flash and the audible alarm will sound.

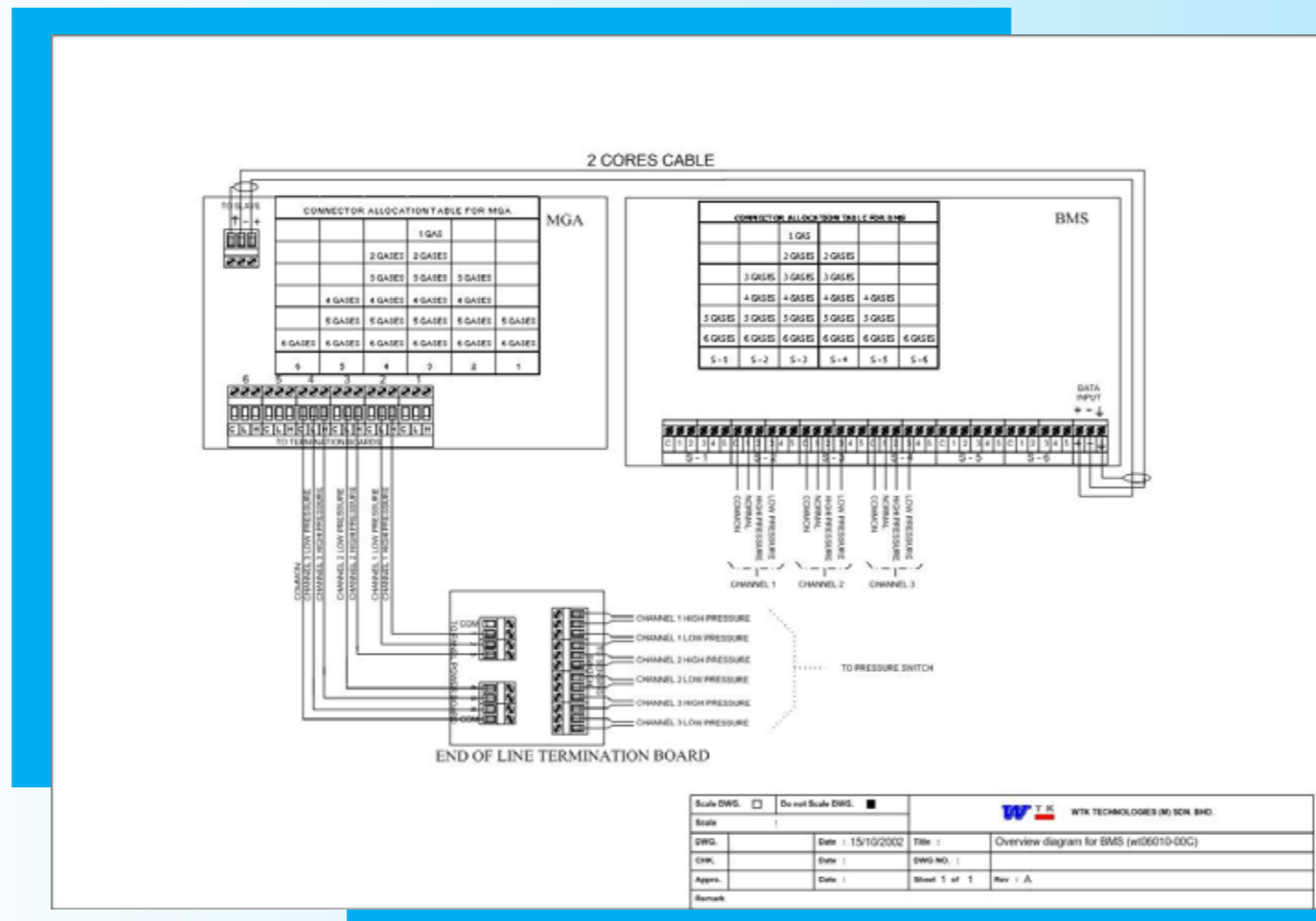
As soon as the audible alarm is muted or the power returns, the lamps will operate as normal.

The battery reserve enables the system to remain in operation for up to 8 hours with only the lamps on the panel affected by the power failure out of operation, or for 4 hours if the panel is set for full backup.

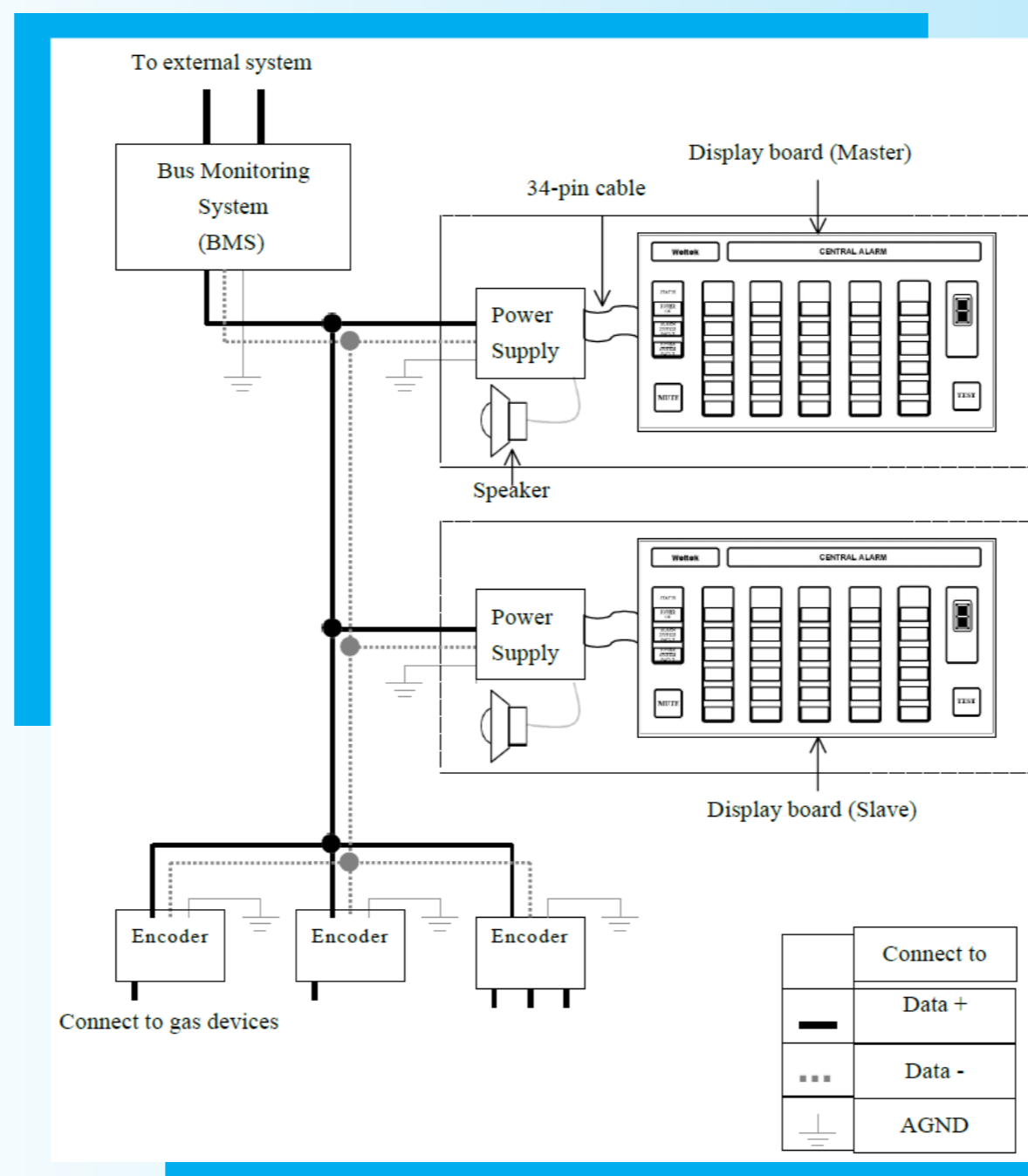


Innovative Design in Medical Engineering

Typical Layout Of Area Alarm, BMS Interface & EOL



Typical Layout Of Central Alarm & Transmitters



Technical Specification

MS 2675-1:2017 Medical gas systems
 MS 2675-1:2017 Medical gas systems
 HTM 2022:1997/HTM02-01 – Medical Gas Pipeline system
 HTM 2020 – Electrical Safety Low Voltage System
 CII – NHS Estates Model Engineering Specification
 EN737-3: 1998 – Medical Gas Pipeline System
 EN ISO 7396-1 – Medical gas pipeline systems

Designation : WT06001 Flush Mount medical gas alarm complete
 WT06002 Surface Mount medical gas alarm complete
 WT06011 Central Alarm
 Dimension : Varies
 Material : Aluminium and galvanized box
 Finishing : Epoxy Powder Coatings
 Electronics : PCB indicator with membrane finish
 Power Rating : 240VAC input, 50/60 Hz

Model Number



WT06001	Flush Mount medical gas area alarm	WT06008	Pressure Switch Assembly complete with Stub - HI/LO
WT06002	Surface Mount medical gas area alarm	WT06009	Vacuum Switch Assembly complete with Stub - VAC
WT06003	End of Line Monitor - 1 Gas	WT06010	BMS interface for area alarm, 1G, 2G, 3G, 4G & 5G
WT06004	End of Line Monitor - 2 Gas	WT06011	Central Alarm / Repeater Central Alarm
WT06005	End of Line Monitor - 3 Gas	WT060122	Gas Transmitter
WT06006	End of Line Monitor - 4 Gas	WT060133	Gas Transmitter
WT06007	End of Line Monitor - 5 Gas		

Actual Devices :

